

Frame anchor type RA-U



Cross references

Bit hexalobular TX30
 Hammer drill SDS plus®
 Precision drill bit HSS

Application range

- > Direct fastening of plastic and wooden windows in masonry and concrete, without any anchors
- > Efficient spaced fixing of windows and doors
- > Installation according to the RAL quality association guidelines for windows and doors

Properties

- > Burglar-resistant (RC2), tested on steel-free plastic windows
- > Reduced forming moulding and exact fit due to perfect thread geometry
- > Fast installation, reliable anchoring
- > Including white RAL 9010 push-on caps
- > All-purpose for various window materials
- > Case-hardened steel
- > In the case of steel-reinforced windows, it is possible to dispense with pressure-resistant backing at the sides

Installation process

- > Drill Ø 6.2 mm frame holes, in-plant or on site, spacing acc. to RAL quality assessment
- > Align frame thoroughly in masonry opening
- > Drill holes into stone, for Ø refer to table, drill hole depth = installation depth + 10 mm
- > Fasten the EJOT frame anchors
- > Push on cap if necessary

Edge distances

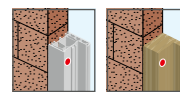
It is a special benefit of the EJOT frame anchors that they have virtually no expansion. Therefore, significantly smaller edge distances are possible than with conventional anchors. Please note the information given by the wall material manufacturer. Without specification given by the wall material manufacturer, we recommend a minimum edge distance of 50 mm for the EJOT frame anchors.

Note

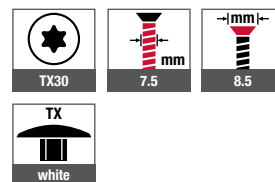
For the installation of burglar-resistant or anti-fall devices, special assembly instructions apply!

www.ejot.com/window-and-glass-facade-technology

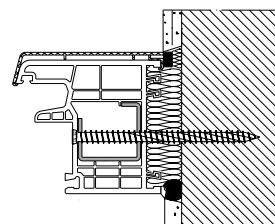
Applications



Technical specifications



Certifications





Building materials	Installation depth ≥ [mm]
Concrete	30
Sand-lime brick, solid brick	40
Vertically perforated brick, lightweight concrete, pumice, aerated concrete	60
Soft wood	60
Hard wood	40

Building materials	Pre-drilling diameter [mm]	Drilling method
Steel, t = 2 mm	6.2	Rotary drilling
Steel, t = 4 mm	6.5	Rotary drilling
Concrete ≥ C12/15, Solid sand-lime brick, solid brick	6.0	Hammer drilling
Perforated sand-lime brick, Hollow block, hard wood	6.0	Rotary drilling
Vertically perforated brick ≥ Plan T12	5.0	Rotary drilling
Aerated concrete ≥ PP4	omitted	omitted

Product online



Order description	Length [mm]	PU [pieces]	Price/100 [EUR]	Article number	EAN
zinc-plated, blue passivated					
Frame anchor type RA-U-7.5x40	40	100		2261040601	4061245012865
Frame anchor type RA-U-7.5x60	60	100		2261060601	4061245012858
Frame anchor type RA-U-7.5x70	70	100		2261070601	4061245012841
Frame anchor type RA-U-7.5x80	80	100		2261080601	4061245012834
Frame anchor type RA-U-7.5x100	100	100		2261100601	4061245012827
Frame anchor type RA-U-7.5x120	120	100		2261120601	4061245012810
Frame anchor type RA-U-7.5x135	135	100		2261135601	4061245012803
Frame anchor type RA-U-7.5x150	150	100		2261150601	4061245012797
Frame anchor type RA-U-7.5x180	180	100		2261180601	4061245012780
Frame anchor type RA-U-7.5x210	210	100		2261210601	4061245012773
Other colours for cover caps available on request					